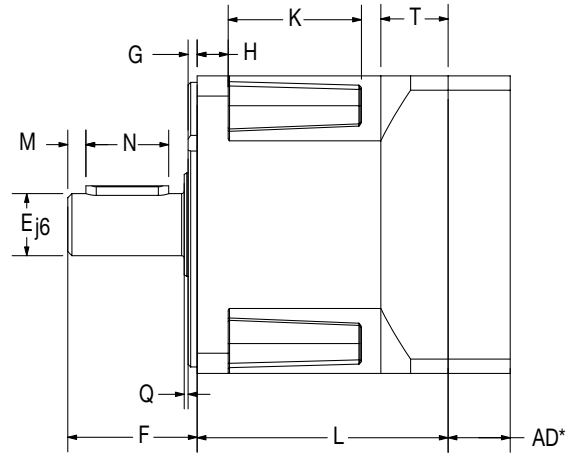
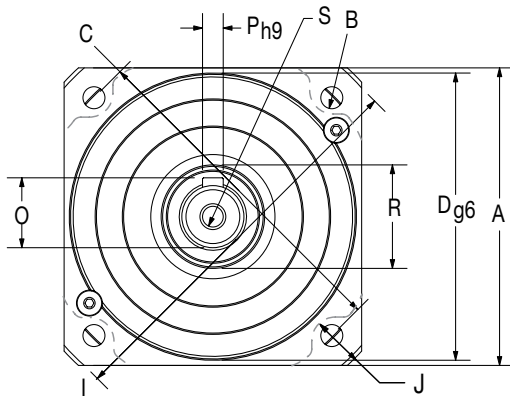


PX Series Gen II Dimensions



Metric Frame Sizes

Frame Size	A		B		C		D		E		F		G		H		I		J		K	
	Square Flange	Bolt Hole	Bolt Circle	Pilot Diameter	Output Shaft Diameter	Output Shaft Length	Pilot Thickness	Flange Thickness	Housing Diameter	Housing Recess	Recess Length											
	(mm) (in)	(mm) (in)	(mm) (in)	(mm) (in)	(mm) (in)	(mm) (in)	(mm) (in)	(mm) (in)	(mm) (in)	(mm) (in)	(mm) (in)	(mm) (in)	(mm) (in)	(mm) (in)	(mm) (in)	(mm) (in)	(mm) (in)	(mm) (in)	(mm) (in)	(mm) (in)	(mm) (in)	
PX60	62 2.441	5.5 0.217	70 2.756	50 1.969	16 0.630	25 0.984	2.5 0.098	8 0.315	82 3.228	5 0.197	24 0.945											
PX90	90 3.543	6.5 0.256	100 3.937	80 3.150	20 0.787	40 1.575	3 0.118	10 0.394	116 4.567	6.5 0.256	33 1.299											
PX115	115 4.528	8.5 0.335	130 5.118	110 4.331	24 0.945	50 1.969	3.5 0.138	14 0.551	152 5.984	7.5 0.295	42 1.654											

Frame Size	L1		L2		M		N		O		P		Q		R		S		T	
	Length Single Stage	Length Double Stage	Distance from Shaft End	Keyway Length	Key Height	Keyway Width	Shoulder Height	Shoulder Diameter	Tap & Depth (end of shaft)	Rear Housing Thickness										
	(mm) (in)	(mm) (in)	(mm) (in)	(mm) (in)	(mm) (in)	(mm) (in)	(mm) (in)	(mm) (in)	(mm) (in)	(mm) (in)	(mm) (in)	(mm) (in)	(mm) (in)	(mm) (in)	(mm) (in)	(mm) (in)	(mm) (in)	(mm) (in)	(mm) (in)	(mm) (in)
PX60	70.3 2.768	105.3 4.146	3 0.118	16 0.630	18 0.709	5 0.197	1 0.039	22 0.866	M5x8	20.3 0.799										
PX90	80 3.150	123.5 4.862	5 0.197	28 1.102	22.5 0.886	6 0.236	1 0.039	35 1.378	M8x16	20 0.787										
PX115	97 3.819	150.2 5.913	7 0.276	32 1.260	27 1.063	8 0.315	1.5 0.059	50 1.969	M8x16	26 1.024										

NEMA Frame Sizes

Frame Size	B		C		D		E		F		N		O		P	
	Bolt Hole	Bolt Circle	Pilot Diameter	Output Shaft Diameter	Output Shaft Length	Keyway Length	Keyway Depth	Keyway Width								
	(in) (mm)	(in) (mm)	(in) (mm)	(in) (mm)	(in) (mm)	(in) (mm)	(in) (mm)	(in) (mm)	(in) (mm)	(in) (mm)	(in) (mm)	(in) (mm)	(in) (mm)	(in) (mm)	(in) (mm)	
PX23	0.2 4.953	2.633 66.675	1.5 38.100	0.38 9.525	1 25.400	— —	— —	— —								
PX34	0.22 5.512	3.88 98.425	2.88 73.025	0.5 12.700	1.25 31.750	1.06 27.000	0.07 1.829	0.13 3.251								
PX42	0.28 7.137	4.95 125.730	2.19 55.550	0.63 15.875	1.5 38.100	1.14 29.007	0.09 2.388	0.19 4.775								

PX23 has a flat on output shaft, not a keyway

NOTE: NEMA Sizes have 20% lower torque/stiffness ratings due to smaller output shaft diameter.